

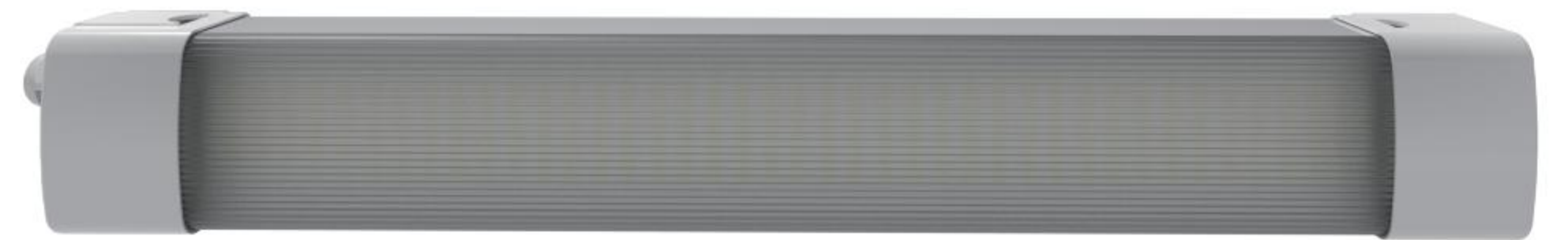


Titan IP65 Battens

For faster installation on site

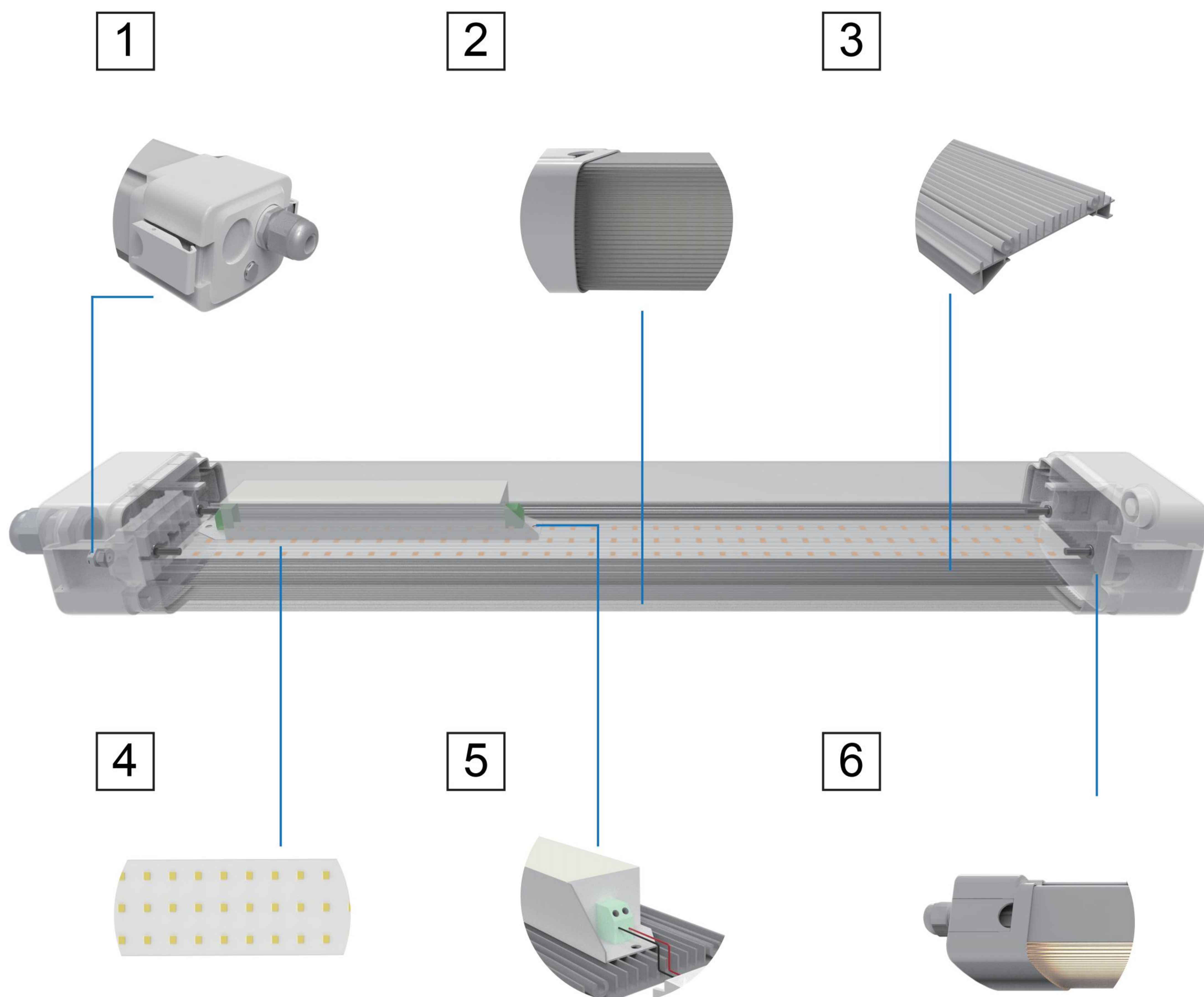
Titan IP65 Batten Fitting Series

- Fast installation with push wire connector and lock & lock end cap.
- Engineered to achieve IP65, IK08 and Chemical resistance.
- Up to 10,000 lms output, with great efficiency up to 130lms/w (depends on driver and LED chip selection.)
- Large and strong 6063 aluminium heat sink to ensure the long service life.
- Full length available for 0.9m, 1.2m, 1.5m and 1.8m.



Titan IP65 Series

The structure of Titan IP65 Series



1 Newly designed Lock & Lock end cap allowing fast wiring and installation; end to end series installation is allowed.

2 The batten fitting is fully covered by polycarbonate (PC) and lens make the fitting suitable for a wide range of applications, weather conditions and environments.

3 A well-structured heat sink made of 6063 aluminium not only provide heat management function for the LED Chips, but also support the strength of full fitting.

4 Wide range of selection of 2835 LED chips are available for the customers requirements.

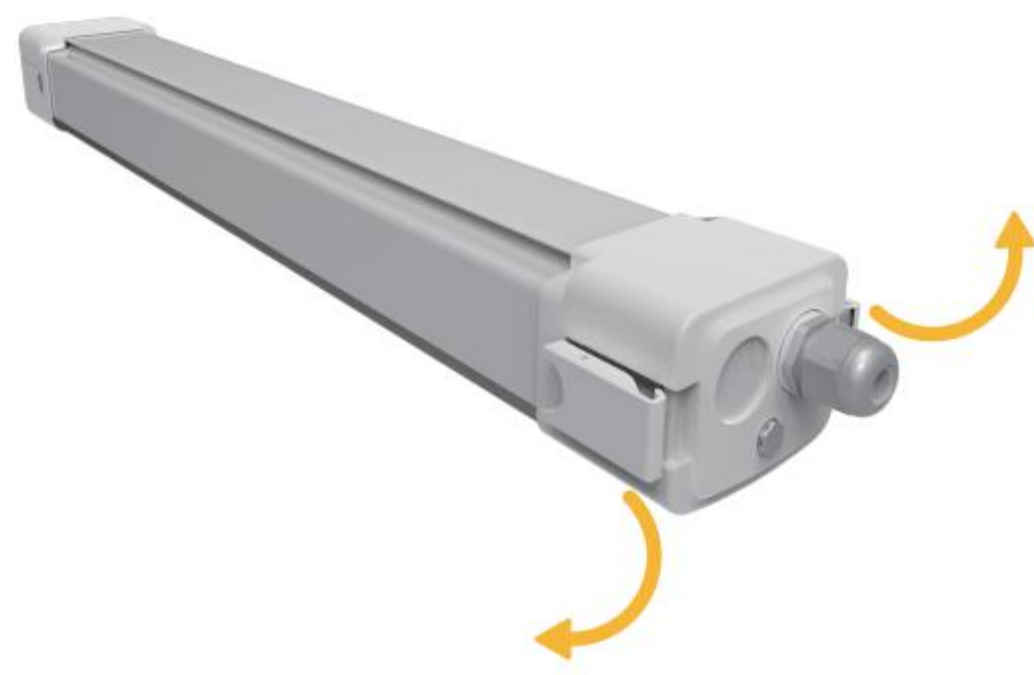
5 Standard Driver version and DoB version both available to suit different cost requirement.

6 Optical engineered to ensure the even spread of the light from the fitting.

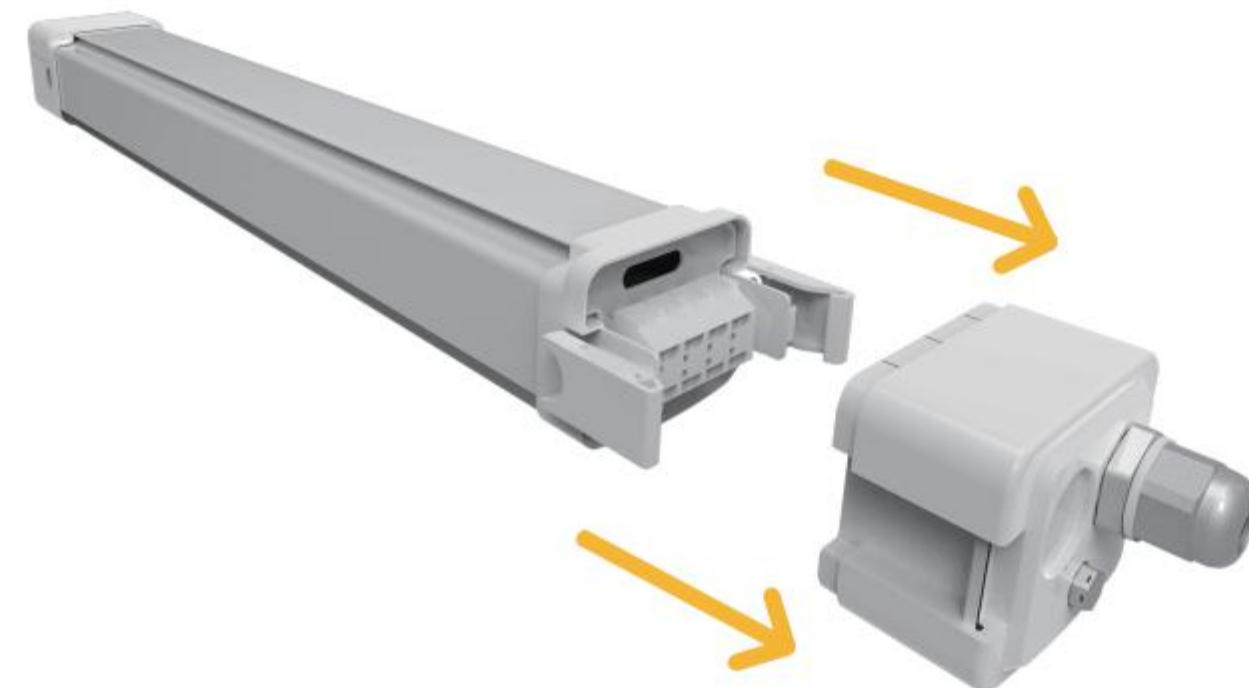
Titan IP65 Series

Faster Installation Demonstration.

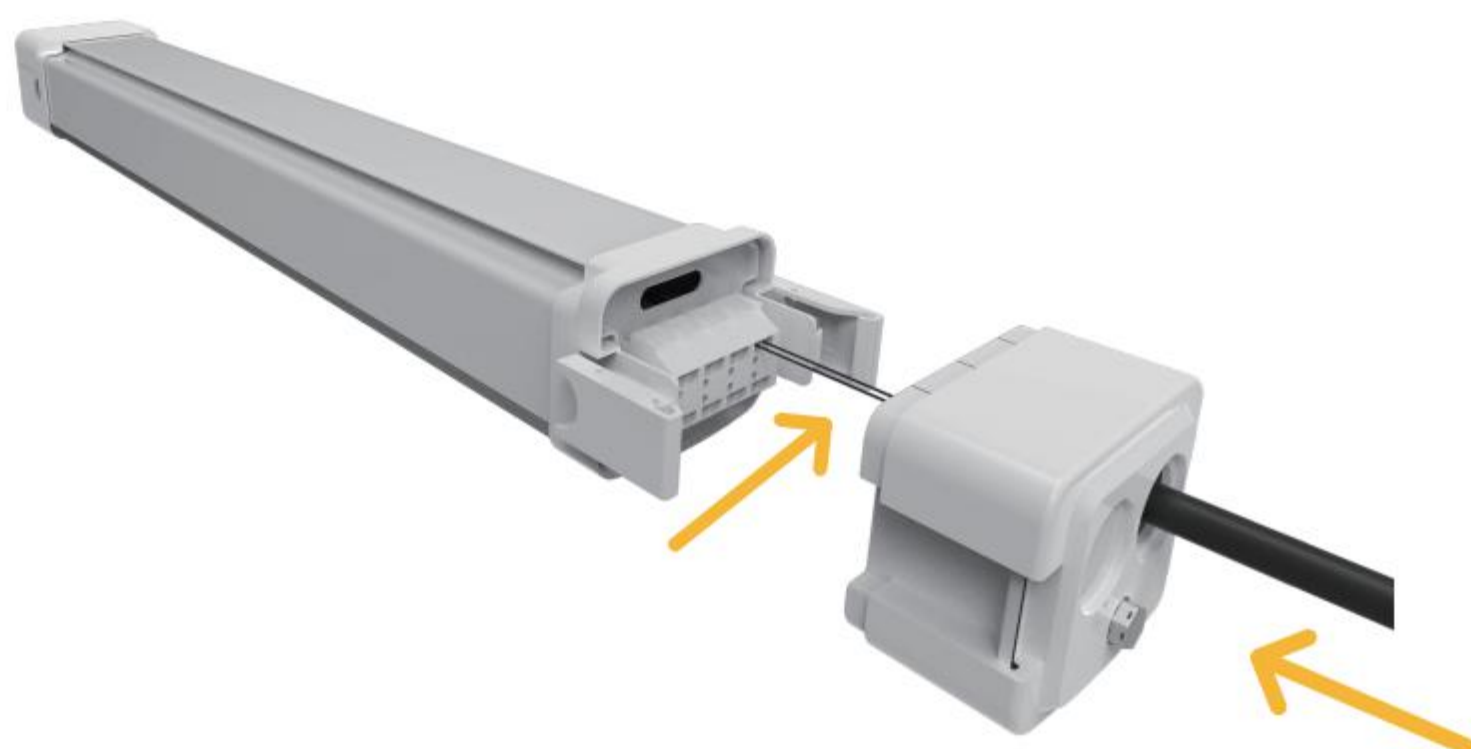
Installation steps:



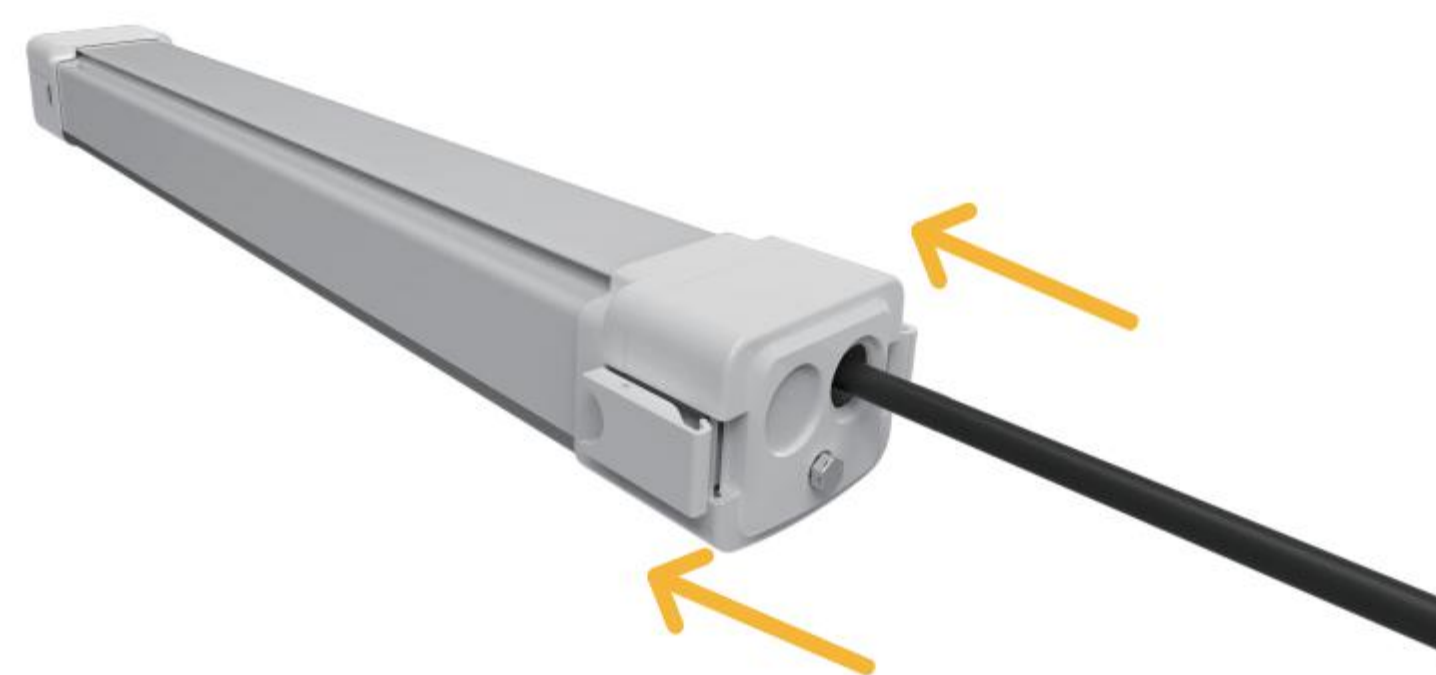
- ① Release the lock & lock end cap.



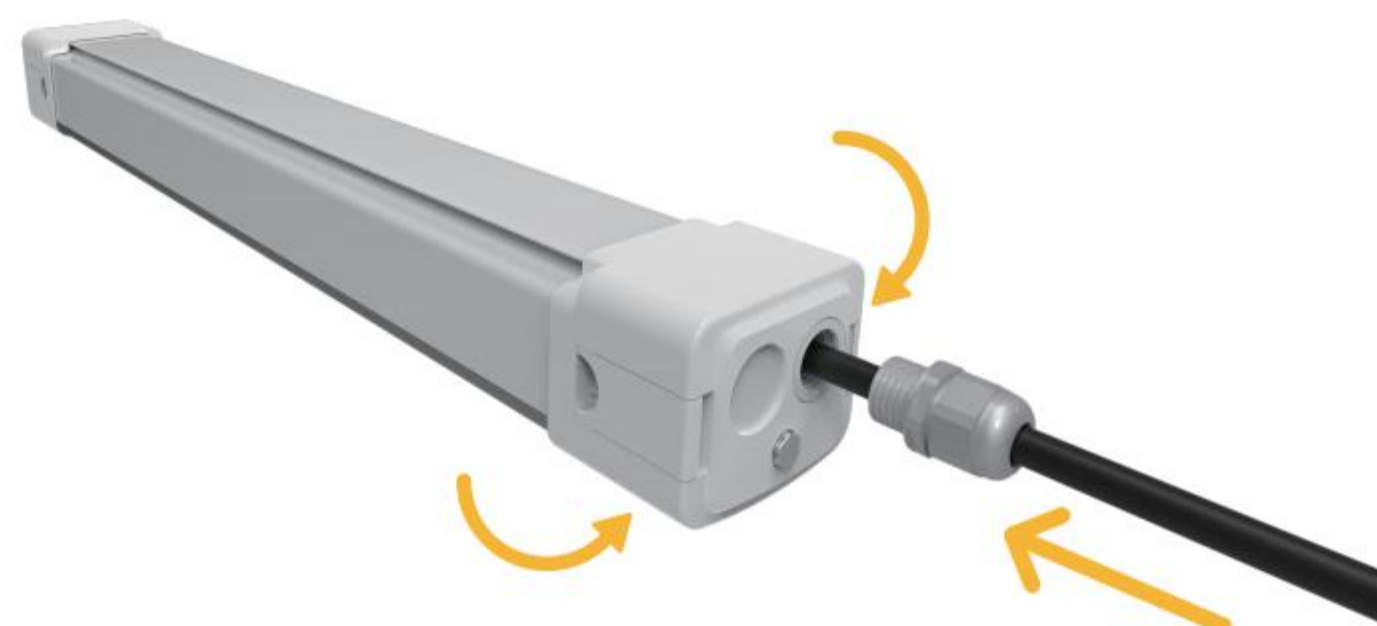
- ② Remove the end the cap and cable glands.



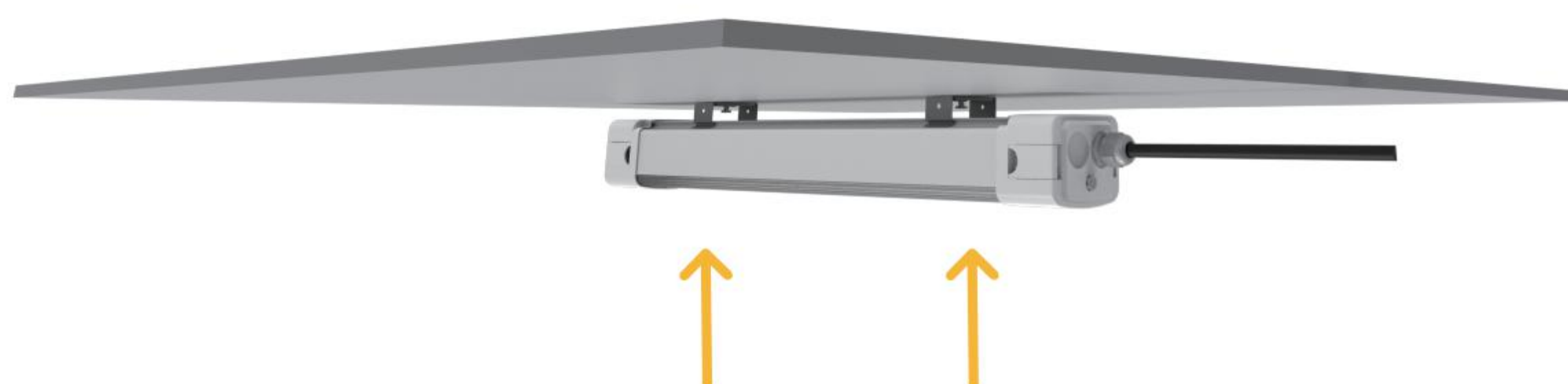
- ⚡ ③ Push the cable into wire connector.



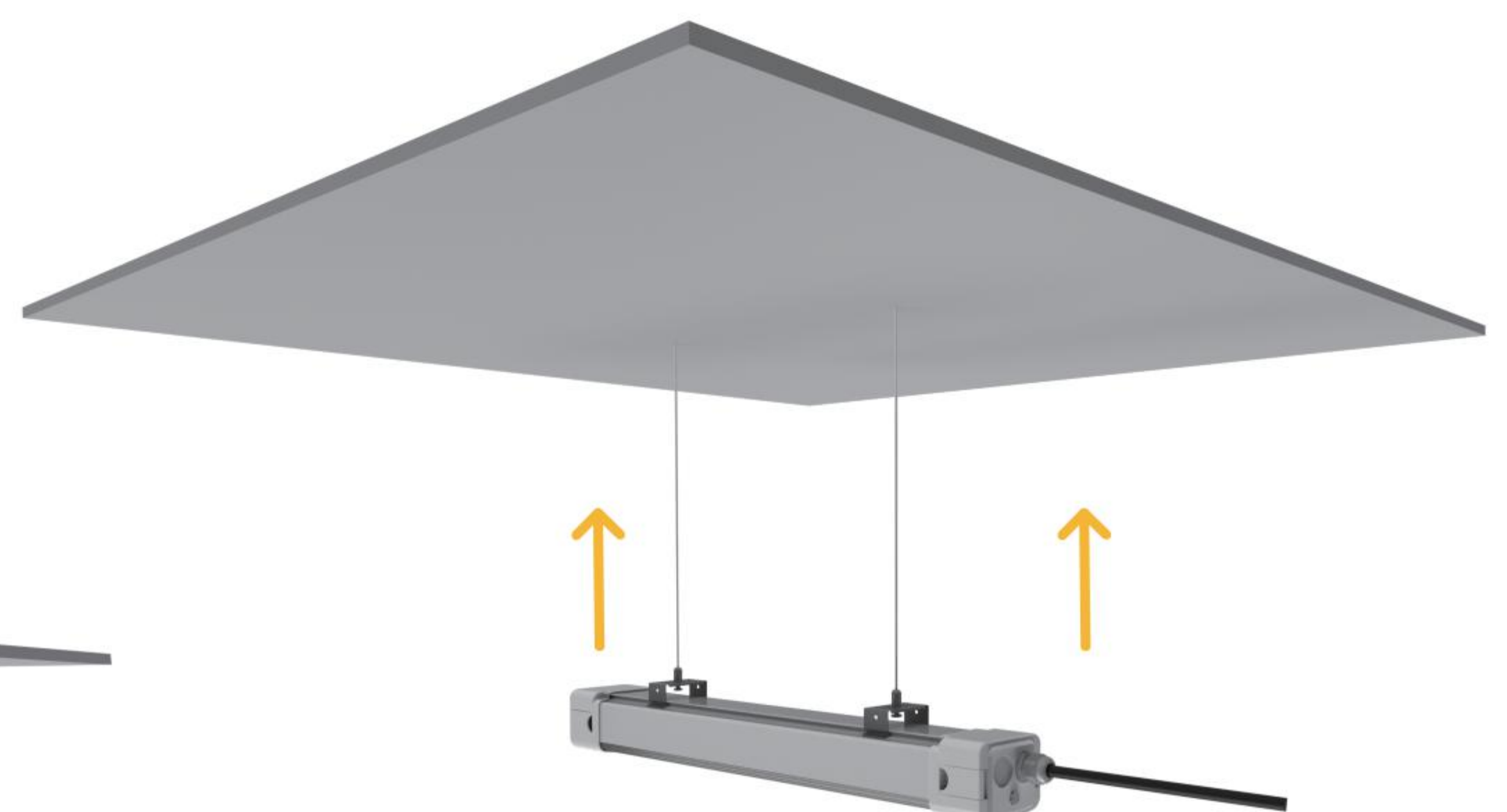
- ④ Lock the lock & lock end cap to the main body.



- ⑤ Tighten up the glands to the end cap.




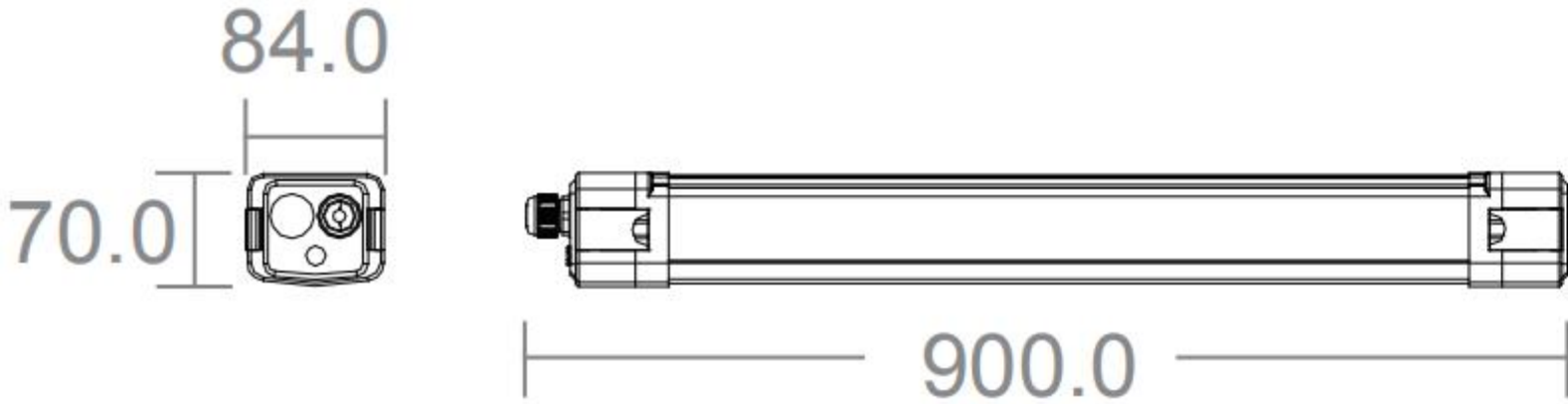

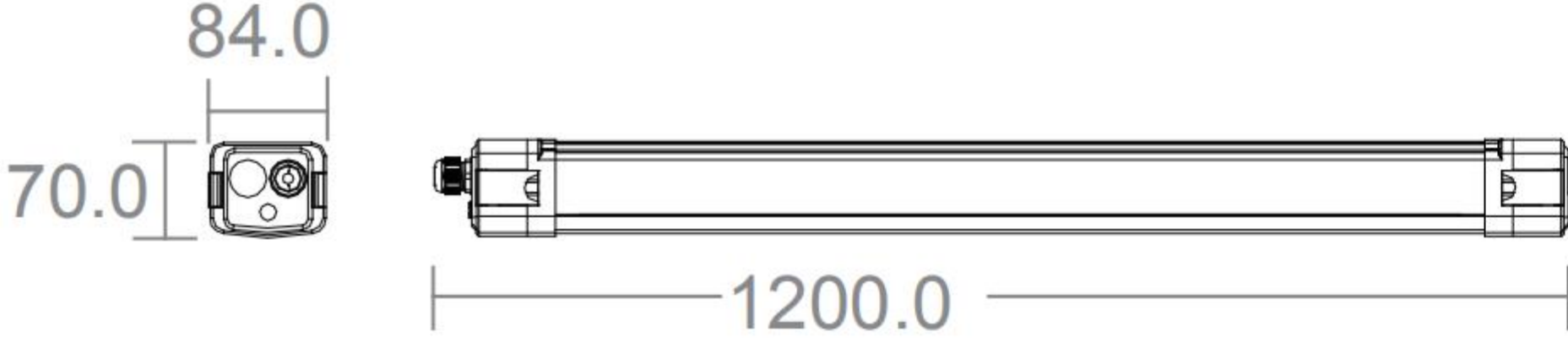

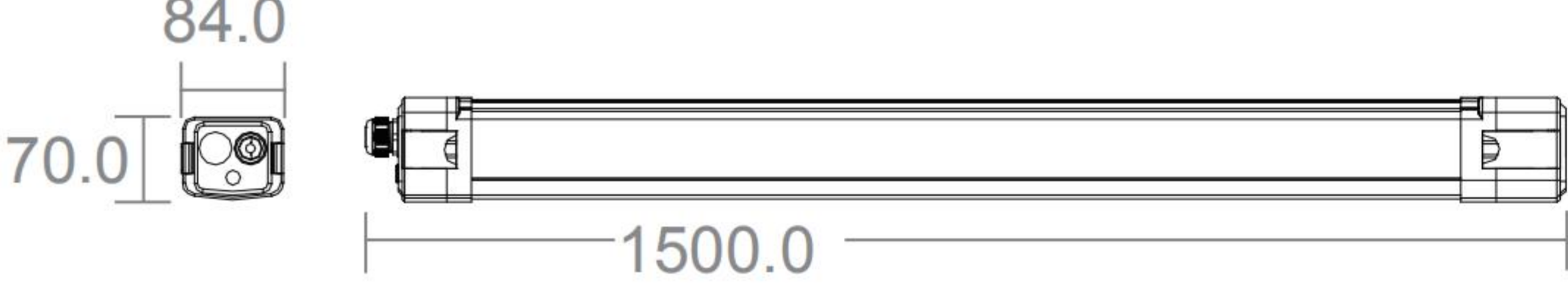

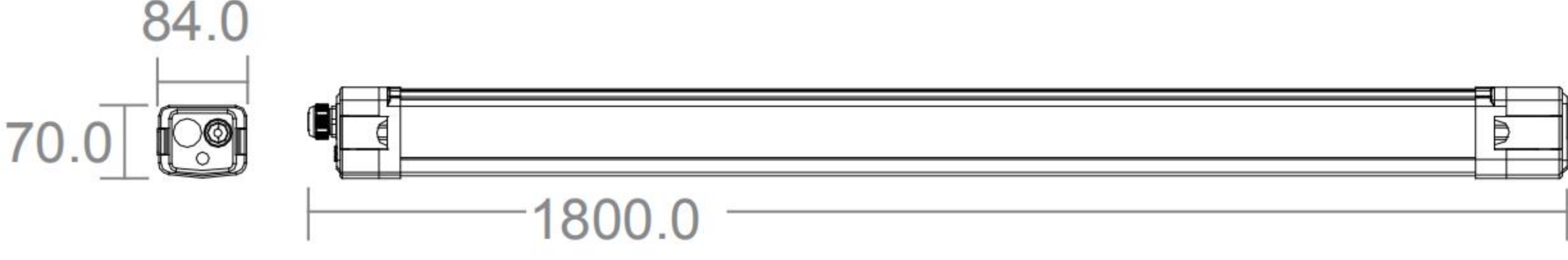
- ⑥ Fix the fitting to the mounting holder or suspension kit.



Titan IP65 Series

Brief product specification

Titan IP65 Series Size (Unit:mm)

| <div><div></div><div></div></div> | | | | | |
|--|---------------------|--------------------|--------------------|-----|----------------|
| RANG | Main Light Power(W) | Initial Lum Output | Efficiency (lms/W) | CRi | Warranty Up to |
| Titan 900 | 30 | 3600 | 120 | 80 | 5 years |
| <div><div></div><div></div></div> | | | | | |
| RANG | Main Light Power(W) | Initial Lum Output | Efficiency (lms/W) | CRi | Warranty Up to |
| Titan 1200 | 40 | 4800 | 120 | 80 | 5 years |
| <div><div></div><div></div></div> | | | | | |
| RANG | Main Light Power(W) | Initial Lum Output | Efficiency (lms/W) | CRi | Warranty Up to |
| Titan 1500 | 60 | 7200 | 120 | 80 | 5 years |
| <div><div></div><div></div></div> | | | | | |
| RANG | Main Light Power(W) | Initial Lum Output | Efficiency (lms/W) | CRi | Warranty Up to |
| Titan 1800 | 80 | 9600 | 120 | 80 | 5 years |

To find out more, please go to victronicscn.com

SALES & SERVICES : +86 755 27642829

E-mail : info@victronicscn.com

Address : 2nd Floor A Building 3rd Industrial area Shiyan Town Baoan District Shenzhen

Wed site : www.victronicscn.com

Company name : Shenzhen Victronics Technology Co., LTD